



ACCOMMODATION 2024

This year we are back at our amazing accommodation at Prince Consort Village in Shepherds Bush! Places are limited and on a first come serve basis so if you want to book please do some as soon as possible as we were only able to hold a certain amount of rooms. Or please feel free to book your own accommodation.

Prince Consort Village is a music hub, built and designed for students in London, with acoustically treated bedrooms so you can sing in your room to your hearts content and it is the exclusive accommodation partner of the Royal College of Music.

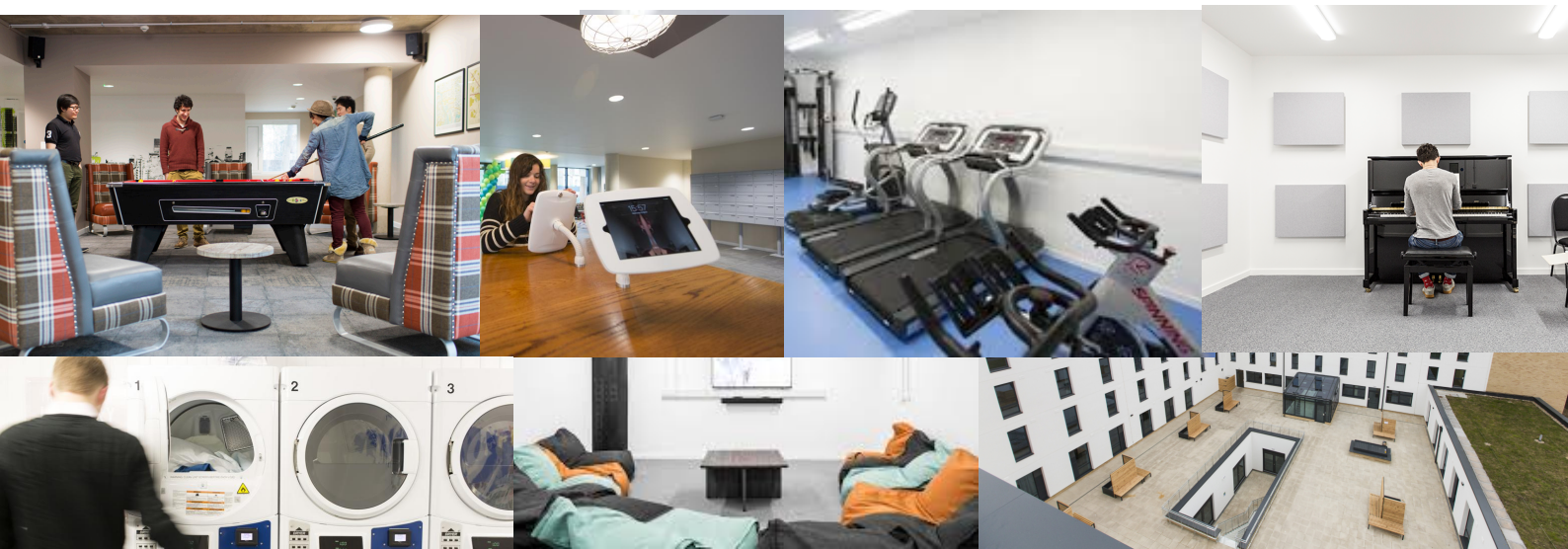


Enjoy their West London location, easily accessible via public transport, with fantastic connections to our West End Academy as well as other parts of London. Whether you choose to travel via Underground or bus, you'll have a simple commute and you can make the most of living in our capital city. With London's West End just a short train ride away, both Ravenscourt Park and Westfield Shopping Centre in the close vicinity, as well as some stylish bars and pubs, there's no need to venture far on your days off.

Facilities

Every price band in Prince Consort Village comes with access to incredible state-of-the-art facilities, including an on-site gym, TV and games areas, alongside 24-hour music practice rooms, social spaces and study rooms.

- Tablets to use free of charge in reception
- Free music practice rooms with piano - perfect to practice your singing - if you would like to book please ask at reception
- Gym - free of charge to use, please see reception to arrange your induction
- Laundry - Need to add funds to a laundry card via debit or credit card
- TV room
- Quiet study room
- The lobby area also includes a pool table, xbox, and seating areas
- There is a vending machine in the lobby with snacks. Other food will need to be purchased outside of the accommodation
- Outside area



Room Options

When it comes to selecting your bedroom we've got options suitable for all! If you're looking for an airy, modern space with a small double bed to call your own, and you're happy to share a kitchen with your new flatmates, our En-Suite Rooms might be just perfect for you. These come with your own ensuite bathroom.

Alternatively, you may wish to explore our Studio room option for the ultimate privacy which has your own small kitchen. Whether you like cooking solo or you just want to relax in peace, you'll have all the space you need here.

*Room type is subject to availability. Please note images are from their showrooms and may differ slightly. Please also note, bedrooms located above the first floor may have windows which only open a very small way amount due to safety regulations for student accommodation in the UK. There is no aircon at this accommodation (and throughout many UK buildings) in the case of a heatwave the staff at the accommodation will provide extra fans if they have some available and you may wish to purchase one of your own. We are able on request to provide a room for you and your friend as a double occupancy, we would recommend the studio room for this as it is bigger, although there is one small double bed you may decide to find your own way of making the room work for you. There is a small surcharge per night for double occupancy and please let us know if that is something we can help with.

Ensuite Room

With private bathroom, small double bed and study desk, you'll have everything you need. The shared kitchen/diner means you can cook up a storm with your flatmates. All bedrooms are lockable.

£400 per week (7 nights) Extra nights can be added for £58 per night

This room has its own bathroom with sink, shower and toilet, you will have access to a shared kitchen.



Free Wi-Fi



Small double bed



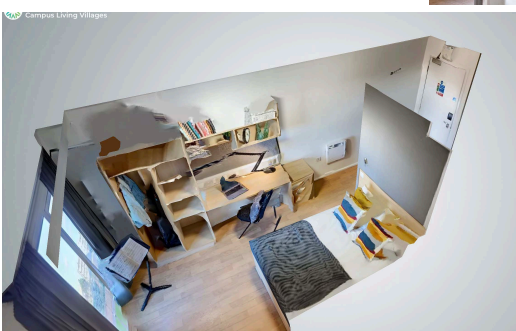
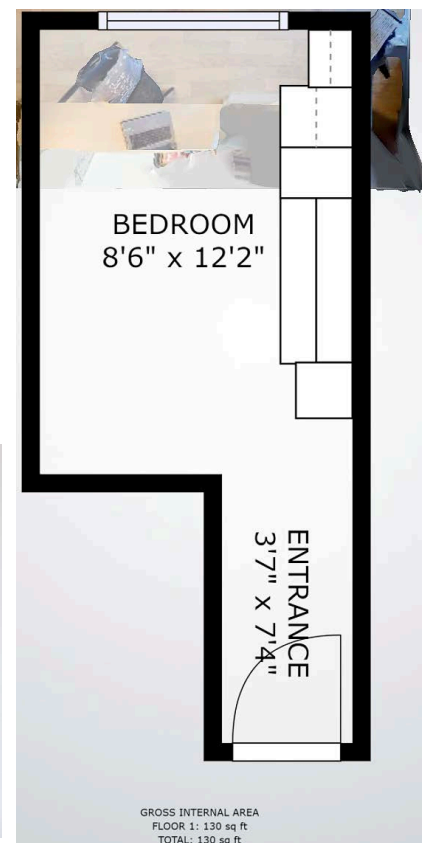
Desk and chair



Wardrobe



Music practice area



Studio Room

If you want to experience more privacy independence, our Studio Rooms are your perfect match. With en-suite bathroom, private kitchen area and small double bed, you'll live in a comfortable, stress-free space. All rooms are lockable.



Kitchen



Free Wi-Fi



Small double bed



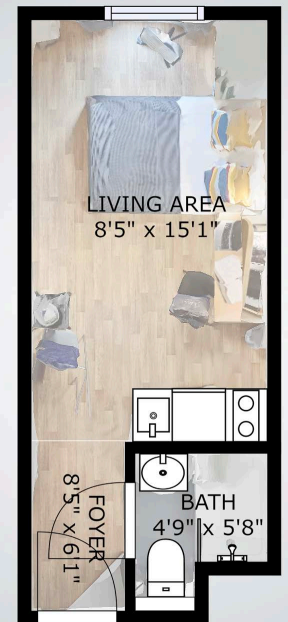
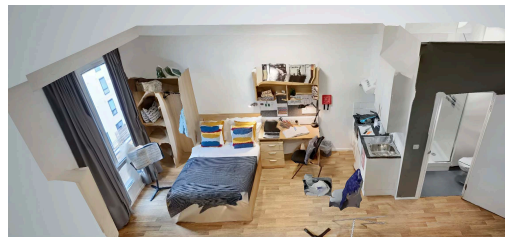
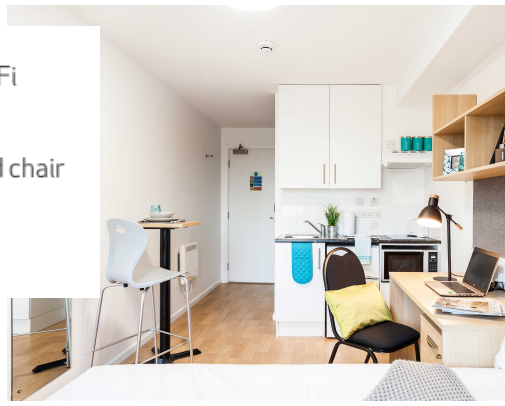
Desk and chair



Wardrobe

£525 per week (7 nights)

Extra nights can be added for £75 per night



Check In/ Check Out

Arrival Dates

Week 1 - Sunday 14th July

Week 2 - Sunday 21st July

Week 3 - Sunday 28th July

Check In from 3pm

Departure Dates

Sunday 21st July

Sunday 28th July

Sunday 4th August

Check out by 10am

Please let us know if you would like to check in/out on a different date and we will try our best to accommodate you.



EXTRAS

Travelcard

There are a number of ways to travel from the accommodation to the Summer Academy. We recommend the London Underground. You can tap in and out of the underground using any contactless card payment or device, alternatively you may wish to get an Oyster Card. These are a £5 deposit from most underground ticket machines/visitor offices in London and you get your deposit back when you hand it back in. You can pay as you go on the card or purchase a Zone 1-2 weekly Travelcard on there from an underground ticket machine which is approx £38 per week. This covers you for trains, London underground and buses at any time of the day and you can use it as many times as you wish.

Chaperone

Aged 16 and 17 - The accommodation states we need to have a chaperone onsite to accompany you, therefore there is an additional charge for this age group. Depending on what option you choose the chaperone can also take you to the West End Academy each day via public transport and be there to check in with you before you go to sleep so we know you are back safely.

Price: £100 Basic Cost or £250 per week is our more supported option - Please ask for further details

<p>Equipment</p>	<p><u>IN EACH BEDROOM</u></p> <p>Bedding:</p> <ul style="list-style-type: none"> • Bed with mattress • Mattress protector • 2 x pillows • 1 x duvet • All cover sheets <p>Towels</p> <ul style="list-style-type: none"> • 1 x bath towel • 1 x hand towel <p>Toiletries (disposable):</p> <ul style="list-style-type: none"> • Toilet rolls <p>Desk and desk chair</p>
	<p>Wardrobe Shelving</p> <p><u>IN EACH FLAT COMMUNAL AREA:</u></p> <p>Kitchen packs</p> <ul style="list-style-type: none"> • 1 x large, 1 x small saucepan • 1 x frying pan • Crockery <ul style="list-style-type: none"> ○ At least 1 x large plate, small plate and bowl for every room ○ At least 1 x mug and glass for every room • Cutlery <ul style="list-style-type: none"> ○ At least 1 x fork, knife and table spoon for every room • Washing up materials <ul style="list-style-type: none"> ○ Sponge ○ Dish Cloth ○ Multi-surface cleaner spray ○ Washing up liquid (disposable) • Kettle • Toaster • Microwave • Fridge • Cooker • Seating • Iron and ironing board • Dustpan and brush
<p>Requirements</p>	<p>Inclusions are as follows:</p> <p>Rooms: Single occupancy rooms in multi-bed cluster flats.</p> <p>Linen: Clean bed linen and towels per delegate will be provided on arrival and for the duration of the stay.</p> <p>Kitchen: Tea/coffee making facilities provided in kitchens on arrival.</p> <p>Laundry: Laundry facilities are available on site. The machines are card/coin operated.</p> <p>Internet: Internet accessible throughout the property.</p> <p>Check-in: Check-in will be at the reception area at the Student Village.</p> <p>Cleaning: Bedrooms and communal areas will be cleaned on a weekly basis. This will include change of bedding and towels, wipe down of bathrooms, wipe down of surfaces, vacuuming/mopping of flooring, and emptying of communal bins.</p> <p><u>Please note:</u> Cleaning may only be carried out in bedrooms and communal areas that are left in a suitable condition for the CLV cleaning teams to do so. I.e. without the need to move lots of personal items and/or rubbish. Washing of dishes and cooking utensils is not included in weekly cleans or arrival cleaning and must be done by the groups responsible. Each group have to empty communal cupboards and fridges, and leave the bedroom and communal area clean and tidy at the end of each stay.</p>

Location

Your accommodation is in zone 1 Central London, close to Shepherds Bush underground station which gives you access to the Central Line.

London Underground/Tube: To get to the Dominion Theatre you can take:





The **Central line** from **Shepherds Bush** straight to **Tottenham Court Road - 12 minute train time** (18 minute walk from Prince Consort to Shepherds Bush.) You can also catch a bus (237) from outside your accommodation to the station. Total time: 30 minutes, we would allow extra however to give yourself time.

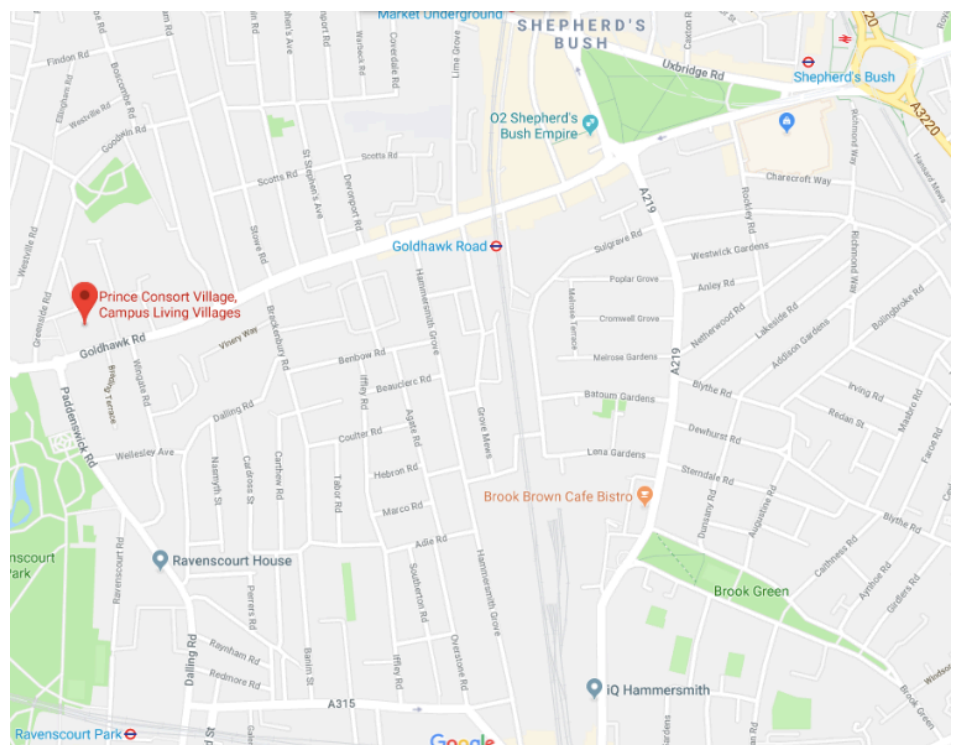
District Line from Ravenscourt Park to Embankment then the **Northern** Line to Tottenham Court Road 50 minutes

Circle line or **Hammersmith and City line** from **Goldhawk Road** station to **Paddington**. Then change onto the **Elizabeth line** to **Tottenham Court Road**. This is a good option if the central line's not on. Total time 45 minutes.

Bus: 94 bus from Prince Consort to Oxford Circus (45 mins), then a 15 minute walk or pick up a bus or tube.

Prince Consort Village
230 Goldhawk Rd,
London
W12 9PL

	Ravenscourt Park (District Line) 15 minute walk
	Goldhawk Road (Circle Line) 15 minute walk
	Shepherd's Bush (Central Line) 15 minute walk
	London Heathrow One hour train



Supermarkets

With access to a kitchen you have the option to cook and prepare meals at the accommodation. For that you need somewhere to buy food from!

There are lots of places in London near to the Academy but here are the nearest places to the accommodation:

CO-OP - The nearest to your accommodation - 260 Goldhawk Rd, White City, London W12 9PE

This is only a couple of minutes from the accommodation and you can ask reception for directions. This supermarket sells most things you will need and it is a handy shop as it is open 7am til 11pm each day except Sunday where it opens 8am-10.30pm.

5 minutes away is also a Sainsbury's local which has an ATM

Waitrose - At Westfield Shepherds Bush

Waitrose is a big supermarket and can be on the pricer side, however the food quality is fantastic and some call it the best supermarket in the UK. They do an essentials range which is their cheapest line and covers lots of items

Lidl - Close to Shepherds Bush Station

Great budget style supermarket, non branded items, they have everything you would need

Sainsbury's Local and Tesco Express - Close to Shepherds Bush Station and lots nearby

2 very reputable supermarkets, these are the smaller version so great for picking up milk, bread etc. There are a lot of these stores in the area.

Local Area

Welcome to Shepherd's Bush. The vibe? It's hectic! With its Overground and Underground stations, a spaghetti-like road network, its old-school street market and the behemoth **Westfield** shopping centre, the Bush is bustling all day and all night. The area's biggest selling point is that it's home to great music venues like the **Shepherd's Bush Empire** and **Bush Hall**, original theatre courtesy of the **Bush Theatre**, as well as plenty of bars and restaurants from all over the world. Here's our pick of the best things to do, see, eat and drink in Shepherd's Bush.



Shepherd's Bush market

Located on the east side of the railway viaduct for the **Hammersmith** and City Tube line is Shepherd's Bush market. One of London's most famous markets, the buzzing shopping site has been operating in the city for over 100 years, making it a key attraction in the West London community. While it may be just a stone's throw away from the shopping superstore Westfield, the two shopping resorts could not be more different in character. Shepherd's Bush Market is an authentic multicultural market packed full of ethnic stalls selling everything from spices to fresh fruit and vegetables. In true market-style, the hot-spot also has stalls selling truly unique finds, from vibrant prints and home furnishings to vinyls and electronic equipment.



Head for a night out at Bush Hall

Bush Hall is an independent live music and events venue with a vibrant history. Over the years, the W12 venue has been used as a dancehall in the roaring 20s, a soup kitchen during World War II, and a rehearsal venue for stars such as Cliff Richard and The Who. Bursting with history, this brilliant venue boasts incredible acoustics, making it the perfect spot for gigs and events. Bush Hall books in a selection of well-known and up-and-coming talent and hosts a selection of club nights.



Satisfy your shopping urges at Westfield

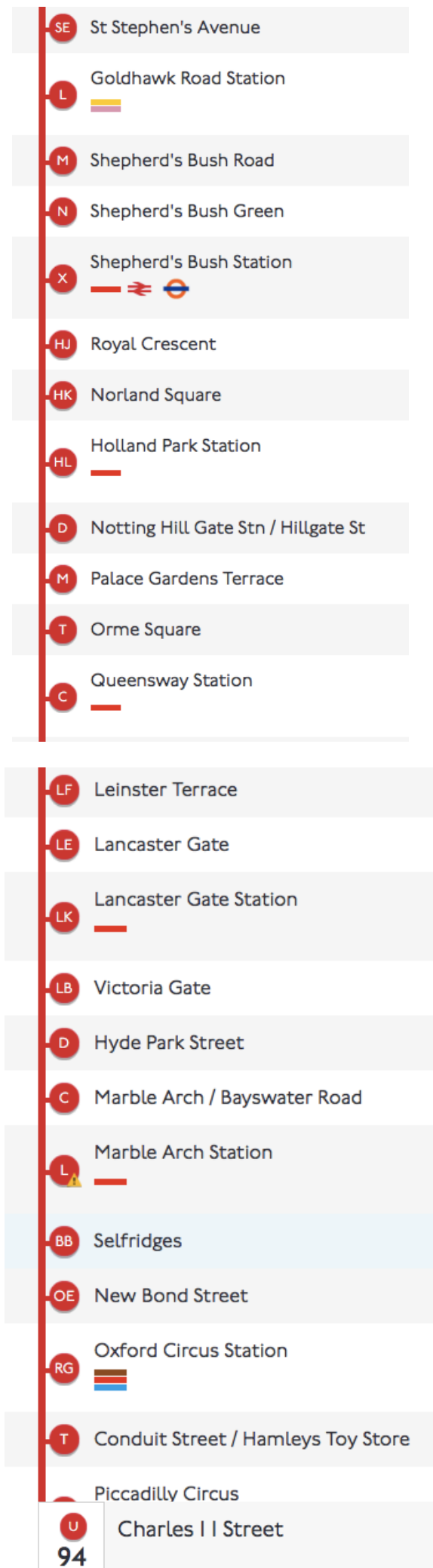
The gigantic shopping venue is quite literally the definition of a shopperholic's paradise. Spanning a staggering 43 acres, the floor area covers 150,000 m², which is the equivalent of about 30 football pitches. With nearly 360 shops all in walking distance from one another, you can quite literally spend the whole day at Westfield, getting lost in the plethora of stores it has to offer. The famous shopping destination boasts a variety of powerhouse designers, international brands and anchor stores. If you work up an appetite from all the shopping, Westfield offers around 50 different eateries, ranging from casual on-the-go food spots to sit-down venues. If you're planning a trip to the landmark venue, make sure you wear comfortable footwear because of the mileage you'll cover. There is also a big cinema here if you fancy catching a film or if you fancy bowling you can check out All Star Lanes.

Chemist: Look out for the stop Boots which is all over London

Near the accommodation on Goldhawk road before Shepherds Bush is Caregrange Pharmacy

94 Bus - 24 hours

- Between the period of 00:00 to 01:00 Services will depart at
 - 00:01
 - 00:16
 - 00:46
- Between the period of 01:00 to 02:00 Services will depart at
 - 01:16
 - 01:46
- Between the period of 02:00 to 03:00 Services will depart at
 - 02:15
 - 02:45
- Between the period of 03:00 to 04:00 Services will depart at
 - 03:15
 - 03:45
- Between the period of 04:00 to 05:00 Services will depart at
 - 04:15
 - 04:46
- Between the period of 05:00 to 06:00 Services will depart at
 - 05:17
 - 05:32
 - 05:44
 - 05:56
- Between the period of 06:00 to 20:00 Services will depart every
Every 4-8 minutes
- Between the period of 20:00 to 00:00 Services will depart every
Every 10-12 minutes



237 Bus - 24 hours

- First Bus - 04:34
- Between the period of 04:46 to 05:00 Services will depart at
 - 04:46
 - 04:58
-
- Between the period of 05:00 to 06:00 Services will depart every
Every 8-12 minutes
- Between the period of 06:00 to 07:00 Services will depart at
 - 06:04
 - 06:10
 - 06:16
 - 06:29
 - 06:35
 - 06:43
 - 06:55
-
- Between the period of 07:00 to 19:00 Services will depart every
Every 5-9 minutes
- Between the period of 19:00 to 20:00 Services will depart at
 - 19:04
 - 19:11
 - 19:19
 - 19:27
 - 19:36
 - 19:46
 - 19:58
-
- Between the period of 20:00 to 00:00 Services will depart every
Every 11-13 minutes
- Between the period of 00:00 to 00:17 Services will depart at
 - 00:04
 - 00:17
-
- Last Bus - 00:29

